

# parSYNC<sup>®</sup> PLUS

Pollutant Activity Relay Synchronization

The integrated Portable Emissions Measurement Systems (iPEMS) that represents the next generation.



The parSYNC<sup>®</sup> PLUS includes a PM Sensor Cartridge AND a GasMOD<sup>™</sup> Sensor Cartridge, which is easy to change out while in the field.

The software and hardware embedded in the parSYNC<sup>®</sup> PLUS is completely customizable and extremely valuable for the 3DATX user community. This broad spectrum and flexibility of analytical and reporting functions for fleet managers, manufacturers, consultants and regulatory compliance specialists is particularly useful as state, federal, and international Governments ramp up new emissions standards.

501 John James Audubon | Suite 200  
East Amherst, NY 14228

[3DATX.COM](http://3DATX.COM)



[info@3DATX.com](mailto:info@3DATX.com)  
1.844.303.3289

# TECHNICAL INFORMATION

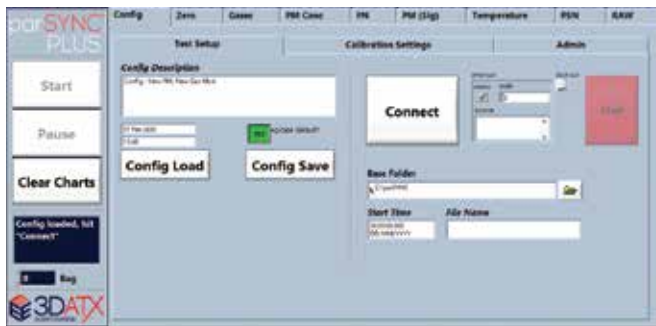
## parSYNC® Series Comparison

Specification	PTI	RDE	PLUS
Small Size and Lightweight	✓	✓	✓
Rugged & Weatherproof	✓	✓	✓
Low Power Consumption	✓	✓	✓
Wireless/Bluetooth Capabilities	✓	✓	✓
Easy to Maintain & Operate	✓	✓	✓
Replaceable PM/PN Sensor Cartridge*	✓	✓	✓
Replaceable GasMOD™ Sensor Cartridge*	✓	✓	✓
Real Driving Emissions (RDE) Compatible		✓	✓
Customizable			✓
Network Configured	✓		

\*PTI unit includes choice of 1 PM/PN sensor cartridge OR 1 GasMOD™ sensor cartridge OR Both

### Features and Benefits of the 3DATX parSYNC® PLUS iPEMS Unit

- Small-size/Light-weight = Easy transport to job site
- Low Power Consumption = A full day of testing
- Rugged, water tight, weather proof construction
- Wireless/Bluetooth capabilities
- Easy to maintain and operate
- Simple and elegant calibration process (CA/GE™ Particulate System, BAR97 Hi/Lo, etc)
- The only commercially available PM/PN-PEMS with a real-time particulate calibration system
- Fully automated LabVIEW® based software (customizable for specific requirements)
- Replaceable PM/PN Particulates Sensor Cartridge
- Replaceable GasMOD™ Sensor Cartridge (NO/NO2/CO2, NOX/CO2/CO, NOX/CO2/HC, etc.)



**We Make Transportation Decisions Easy**